

## Wild State Cider

500 S 59th Ave W  
Duluth, MN 55807  
samantha@wildstatecider.com  
(218) 260-2973

Sample: 2406AIT0751.1544

Strain: 2466506  
Batch#: ; Batch Size: g  
Sample Received: 06/24/2024; Report Created: 06/28/2024

## Birdie Tea + Lemonade

Ingestible, Beverage, Ice/Water



**0.003%**  
10.5 mg/container  
5.2 mg/serving  
**Total THC**

**<LOQ**  
<LOQ  
<LOQ  
**Total CBD**

**0.003%**  
10.5 mg/container  
5.2 mg/serving  
**Total Cannabinoids**

## Cannabinoids

Date Tested: 06/24/2024

Analytes	%	mg/g	mg/ml	mg/serving	LOQ
CBC	<LOQ	<LOQ	<LOQ	<LOQ	0.001
CBD	<LOQ	<LOQ	<LOQ	<LOQ	0.001
CBDa	<LOQ	<LOQ	<LOQ	<LOQ	0.001
CBDV	<LOQ	<LOQ	<LOQ	<LOQ	0.001
CBG	<LOQ	<LOQ	<LOQ	<LOQ	0.001
CBGa	<LOQ	<LOQ	<LOQ	<LOQ	0.001
CBL	<LOQ	<LOQ	<LOQ	<LOQ	0.001
CBN	<LOQ	<LOQ	<LOQ	<LOQ	0.001
Δ8-THC	<LOQ	<LOQ	<LOQ	<LOQ	0.001
Δ9-THC	0.003	0.029	0.029	5.235	0.001
THCa	<LOQ	<LOQ	<LOQ	<LOQ	0.001
THCVa	<LOQ	<LOQ	<LOQ	<LOQ	0.001

Method: HPLC  
Total THC = THCa \* 0.877 + Δ9-THC  
Total CBD = CBDa \* 0.877 + CBD

Total Cannabinoids represents the sum of all cannabinoids in the table above.  
Results are reported on a dry weight basis: Cannabinoid % / (1.0 - moisture content % / 100) = Dry weight cannabinoids %  
LOQ = Limit of Quantitation

## Summary

**Pass**  
Residual Solvents

**Pass**  
Pesticides

**Pass**  
Mycotoxins

**Pass**  
Heavy Metals

**Pass**  
Microbials

4150 98th Ave S  
 Fargo, ND  
(888) 897-4367  
www.hempinspection.com



Bradley Towey

Senior Analytical Chemist



Confident LIMS  
All Rights Reserved  
(866) 506-5866

This product has been tested by Adams Independent Testing using valid testing methodologies. Values reported apply only to the product tested and only as the sample was received. Adams Independent Testing makes no claims as to the efficacy, safety, or other risks associated with any detected or nondetected level of any compounds reported herein. This Certificate shall not be reproduced except in full, without the written approval of Adams Independent Testing. Test results that are Pass/Fail are reported using the Oregon Health Authority, Public Health Division - Chapter 333-007-0320, effective 1/1/2021. Results above the Limit will be considered Fail and will be in red. This is for informational purposes only and can be changed upon request. Measurement Uncertainty is not used for pass/fail conditions but available upon request.

## Wild State Cider

500 S 59th Ave W  
Duluth, MN 55807  
samantha@wildstatecider.com  
(218) 260-2973

Sample: 2406AIT0751.1544

Strain: 2466506  
Batch#: ; Batch Size: g  
Sample Received: 06/24/2024; Report Created: 06/28/2024

## Birdie Tea + Lemonade

Ingestible, Beverage, Ice/Water

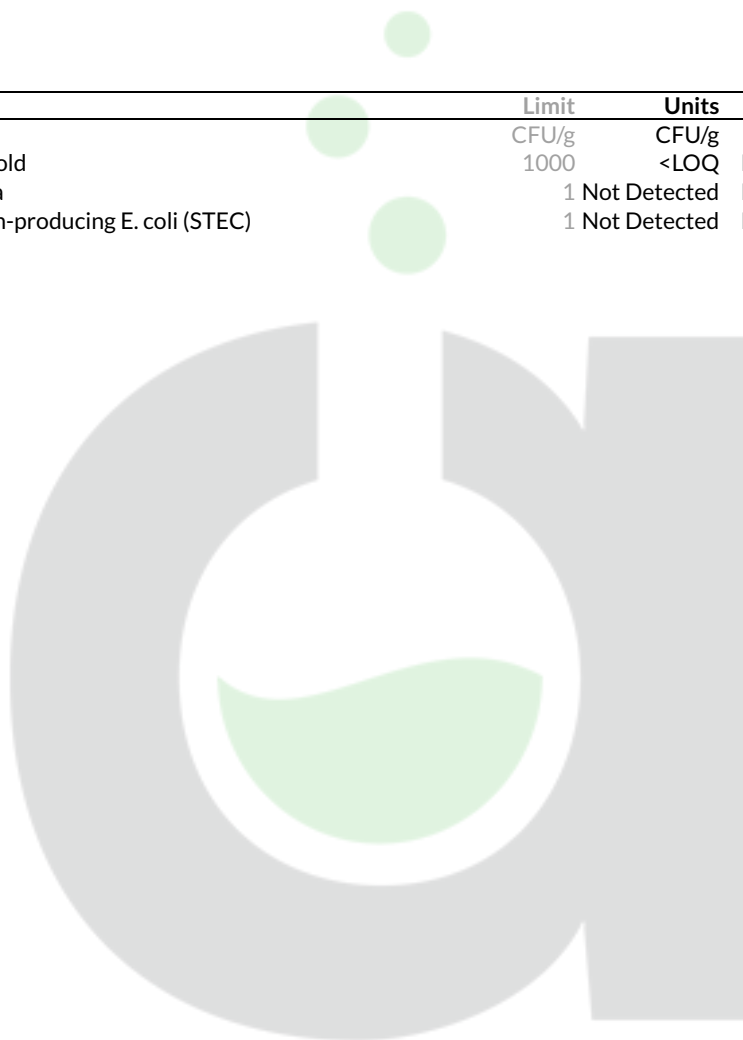


## Microbials

Pass

Date Tested: 06/24/2024

Analyte	Limit	Units	Status
Yeast & Mold	1000	CFU/g	Not Present
Salmonella	1	Not Detected	Not Present
Shiga Toxin-producing E. coli (STEC)	1	Not Detected	Not Present



Method: qPCR

## Wild State Cider

500 S 59th Ave W  
Duluth, MN 55807  
samantha@wildstatecider.com  
(218) 260-2973

Sample: 2406AIT0751.1544

Strain: 2466506  
Batch#: ; Batch Size: g  
Sample Received: 06/24/2024; Report Created: 06/28/2024

## Birdie Tea + Lemonade

Ingestible, Beverage, Ice/Water



## Mycotoxins

Pass

Date Tested: 06/24/2024

Analyte	LOQ	Limit	Units	Status
	PPB	PPB	PPB	
Aflatoxin B1	1.00	20.00	<LOQ	Pass
Aflatoxin B2	1.00	20.00	<LOQ	Pass
Aflatoxin G1	1.00	20.00	<LOQ	Pass
Aflatoxin G2	1.00	20.00	<LOQ	Pass
Ochratoxin A	1.00	20.00	<LOQ	Pass



Method: LCMS

## Wild State Cider

500 S 59th Ave W  
Duluth, MN 55807  
samantha@wildstatecider.com  
(218) 260-2973

Sample: 2406AIT0751.1544

Strain: 2466506  
Batch#: ; Batch Size: g  
Sample Received: 06/24/2024; Report Created: 06/28/2024

## Birdie Tea + Lemonade

Ingestible, Beverage, Ice/Water

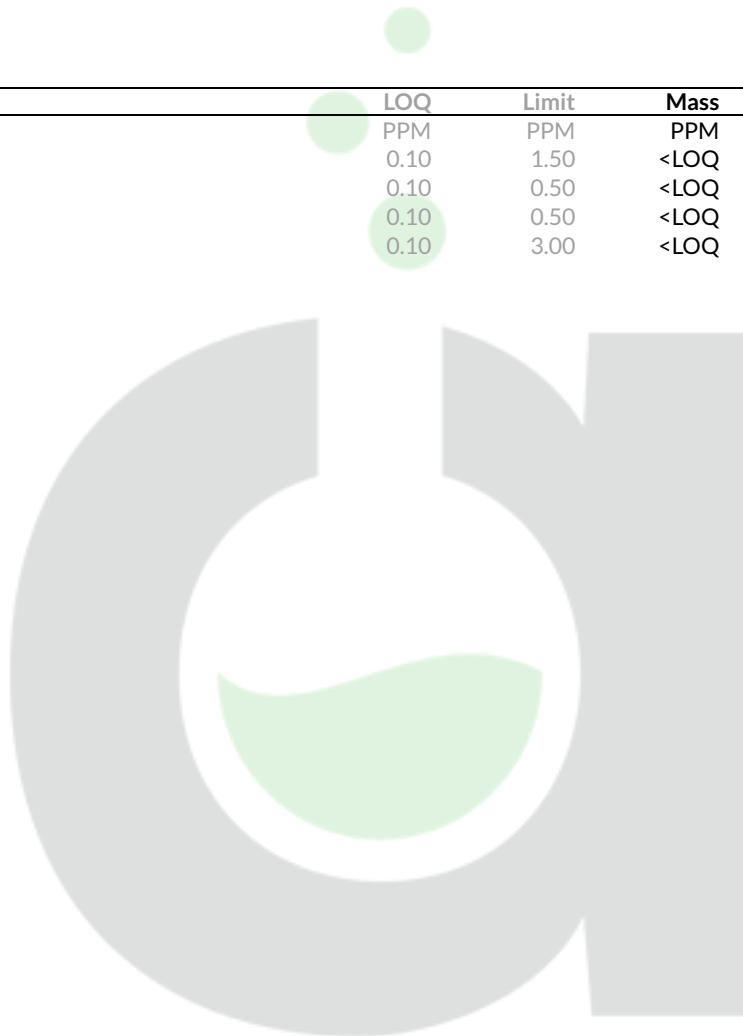


## Heavy Metals

Pass

Date Tested: 06/24/2024

Analyte	LOQ	Limit	Mass	Status
	PPM	PPM	PPM	
Arsenic	0.10	1.50	<LOQ	Pass
Cadmium	0.10	0.50	<LOQ	Pass
Lead	0.10	0.50	<LOQ	Pass
Mercury	0.10	3.00	<LOQ	Pass



Method: ICPMS

## Wild State Cider

500 S 59th Ave W  
Duluth, MN 55807  
samantha@wildstatecider.com  
(218) 260-2973

Sample: 2406AIT0751.1544

Strain: 2466506  
Batch#: ; Batch Size: g  
Sample Received: 06/24/2024; Report Created: 06/28/2024

## Birdie Tea + Lemonade

Ingestible, Beverage, Ice/Water



## Pesticides

Pass

Date Tested: 06/24/2024

Analyte	LOQ	Limit	Mass	Status
	PPM	PPM	PPM	
Abamectin	0.01	0.50	<LOQ	Pass
Acephate	0.01	0.40	<LOQ	Pass
Acequinocyl	0.01	2.00	<LOQ	Pass
Acetamiprid	0.01	0.20	<LOQ	Pass
Aldicarb	0.01	0.40	<LOQ	Pass
Azoxystrobin	0.01	0.20	<LOQ	Pass
Bifenazate	0.01	0.20	<LOQ	Pass
Bifenthrin	0.01	0.20	<LOQ	Pass
Boscalid	0.01	0.40	<LOQ	Pass
Carbaryl	0.01	0.20	<LOQ	Pass
Carbofuran	0.01	0.20	<LOQ	Pass
Chlorantraniliprole	0.01	0.20	<LOQ	Pass
Chlorfenapyr	0.01	1.00	<LOQ	Pass
Chlorpyrifos	0.01	0.20	<LOQ	Pass
Clofentezine	0.01	0.20	<LOQ	Pass
Cyfluthrin	0.01	1.00	<LOQ	Pass
Cypermethrin	0.01	1.00	<LOQ	Pass
Daminozide	0.01	1.00	<LOQ	Pass
DDVP	0.01	1.00	<LOQ	Pass
Diazinon	0.01	0.20	<LOQ	Pass
Dimethoate	0.01	0.20	<LOQ	Pass
Ethoprophos	0.01	0.20	<LOQ	Pass
Etofenprox	0.01	0.40	<LOQ	Pass
Etoxazole	0.01	0.20	<LOQ	Pass
Fenoxycarb	0.01	0.20	<LOQ	Pass

Methods: LCMS and GCMS

4150 98th Ave S  
Fargo, ND  
(888) 897-4367  
www.hempinspection.com



Bradley Towey

Senior Analytical Chemist



Confident LIMS  
All Rights Reserved  
(866) 506-5866

This product has been tested by Adams Independent Testing using valid testing methodologies. Values reported apply only to the product tested and only as the sample was received. Adams Independent Testing makes no claims as to the efficacy, safety, or other risks associated with any detected or nondetected level of any compounds reported herein. This Certificate shall not be reproduced except in full, without the written approval of Adams Independent Testing. Test results that are Pass/Fail are reported using the Oregon Health Authority, Public Health Division - Chapter 333-007-0320, effective 1/1/2021. Results above the Limit will be considered Fail and will be in red. This is for informational purposes only and can be changed upon request. Measurement Uncertainty is not used for pass/fail conditions but available upon request.

## Wild State Cider

500 S 59th Ave W  
Duluth, MN 55807  
samantha@wildstatecider.com  
(218) 260-2973

Sample: 2406AIT0751.1544

Strain: 2466506  
Batch#: ; Batch Size: g  
Sample Received: 06/24/2024; Report Created: 06/28/2024

## Birdie Tea + Lemonade

Ingestible, Beverage, Ice/Water



## Pesticides

Pass

Date Tested: 06/24/2024

Analyte	LOQ	Limit	Mass	Status
	PPM	PPM	PPM	
Fenpyroximate	0.01	0.40	<LOQ	Pass
Fipronil	0.01	0.40	<LOQ	Pass
Fonicamid	0.01	1.00	<LOQ	Pass
Fludioxonil	0.01	0.40	<LOQ	Pass
Hexythiazox	0.01	1.00	<LOQ	Pass
Imazalil	0.01	0.20	<LOQ	Pass
Imidacloprid	0.01	0.40	<LOQ	Pass
Kresoxim Methyl	0.01	0.40	<LOQ	Pass
Malathion	0.01	0.20	<LOQ	Pass
Metalaxyl	0.01	0.20	<LOQ	Pass
Methiocarb	0.01	0.20	<LOQ	Pass
Methomyl	0.01	0.40	<LOQ	Pass
Methyl Parathion	0.01	0.20	<LOQ	Pass
MGK-264	0.01	0.20	<LOQ	Pass
Myclobutanil	0.01	0.20	<LOQ	Pass
Naled	0.01	0.50	<LOQ	Pass
Oxamyl	0.01	1.00	<LOQ	Pass
Paclobutrazol	0.01	0.40	<LOQ	Pass
Permethrins	0.01	0.20	<LOQ	Pass
Phosmet	0.01	0.20	<LOQ	Pass
Piperonyl Butoxide	0.01	2.00	<LOQ	Pass
Prallethrin	0.01	0.20	<LOQ	Pass
Propiconazole	0.01	0.40	<LOQ	Pass
Propoxur	0.01	0.20	<LOQ	Pass
Pyrethrins	0.01	1.00	<LOQ	Pass

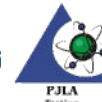
Methods: LCMS and GCMS

4150 98th Ave S  
Fargo, ND  
(888) 897-4367  
www.hempinspection.com



Bradley Towey

Senior Analytical Chemist



Confident LIMS  
All Rights Reserved  
(866) 506-5866

This product has been tested by Adams Independent Testing using valid testing methodologies. Values reported apply only to the product tested and only as the sample was received. Adams Independent Testing makes no claims as to the efficacy, safety, or other risks associated with any detected or nondetected level of any compounds reported herein. This Certificate shall not be reproduced except in full, without the written approval of Adams Independent Testing. Test results that are Pass/Fail are reported using the Oregon Health Authority, Public Health Division - Chapter 333-007-0320, effective 1/1/2021. Results above the Limit will be considered Fail and will be in red. This is for informational purposes only and can be changed upon request. Measurement Uncertainty is not used for pass/fail conditions but available upon request.

## Wild State Cider

500 S 59th Ave W  
Duluth, MN 55807  
samantha@wildstatecider.com  
(218) 260-2973

Sample: 2406AIT0751.1544

Strain: 2466506  
Batch#: ; Batch Size: g  
Sample Received: 06/24/2024; Report Created: 06/28/2024

## Birdie Tea + Lemonade

Ingestible, Beverage, Ice/Water



## Pesticides

Pass

Date Tested: 06/24/2024

Analyte	LOQ	Limit	Mass	Status
	PPM	PPM	PPM	
Pyridaben	0.01	0.20	<LOQ	Pass
Spinosad	0.01	0.20	<LOQ	Pass
Spiromesifen	0.01	0.20	<LOQ	Pass
Spirotetramat	0.01	0.20	<LOQ	Pass
Spiroxamine	0.01	0.40	<LOQ	Pass
Tebuconazole	0.01	0.40	<LOQ	Pass
Thiacloprid	0.01	0.20	<LOQ	Pass
Thiamethoxam	0.01	0.20	<LOQ	Pass
Trifloxystrobin	0.01	0.20	<LOQ	Pass

Methods: LCMS and GCMS

4150 98th Ave S  
Fargo, ND  
(888) 897-4367  
www.hempinspection.com



  
Bradley Towey

Senior Analytical Chemist



Confident LIMS  
All Rights Reserved  
(866) 506-5866

This product has been tested by Adams Independent Testing using valid testing methodologies. Values reported apply only to the product tested and only as the sample was received. Adams Independent Testing makes no claims as to the efficacy, safety, or other risks associated with any detected or nondetected level of any compounds reported herein. This Certificate shall not be reproduced except in full, without the written approval of Adams Independent Testing. Test results that are Pass/Fail are reported using the Oregon Health Authority, Public Health Division - Chapter 333-007-0320, effective 1/1/2021. Results above the Limit will be considered Fail and will be in red. This is for informational purposes only and can be changed upon request. Measurement Uncertainty is not used for pass/fail conditions but available upon request.

## Wild State Cider

500 S 59th Ave W  
Duluth, MN 55807  
samantha@wildstatecider.com  
(218) 260-2973

Sample: 2406AIT0751.1544

Strain: 2466506  
Batch#: ; Batch Size: g  
Sample Received: 06/24/2024; Report Created: 06/28/2024

## Birdie Tea + Lemonade

Ingestible, Beverage, Ice/Water



## Residual Solvents

Pass

Date Tested: 06/24/2024

Analyte	LOQ	Limit	Mass	Status
	PPM	PPM	PPM	
1,4-Dioxane	71.250	380.000	<LOQ	Pass
2-Butanol	437.500	5000.000	<LOQ	Pass
2-Ethoxy-Ethanol	30.000	160.000	<LOQ	Pass
2-Propanol IPA	437.500	5000.000	<LOQ	Pass
Acetone	437.500	5000.000	<LOQ	Pass
Acetonitrile	76.880	410.000	<LOQ	Pass
Benzene	0.375	2.000	<LOQ	Pass
Butanes	156.300	5000.000	<LOQ	Pass
Cumene	13.130	70.000	<LOQ	Pass
Cyclohexane	727.500	3880.000	<LOQ	Pass
Dichloromethane	112.500	600.000	<LOQ	Pass
Ethanol	437.500	5000.000	<LOQ	Pass
Ethyl-Acetate	437.500	5000.000	<LOQ	Pass
Ethyl-Ether	437.500	5000.000	<LOQ	Pass
Ethylene Glycol	116.300	620.000	<LOQ	Pass
Ethylene Oxide	9.375	50.000	<LOQ	Pass
Heptane	437.500	5000.000	<LOQ	Pass
Hexanes	217.500	290.000	<LOQ	Pass
Isopropyl-Acetate	437.500	5000.000	<LOQ	Pass
Methanol	312.500	3000.000	<LOQ	Pass
Pentanes	953.100	5000.000	<LOQ	Pass
Propane	31.250	5000.000	<LOQ	Pass
Tetrahydrofuran	135.000	720.000	<LOQ	Pass
Toluene	166.900	890.000	<LOQ	Pass
Xylenes	1221.000	2170.000	<LOQ	Pass

Method: GCMS (Headspace)

4150 98th Ave S  
Fargo, ND  
(888) 897-4367  
www.hempinspection.com



Bradley Towey

Senior Analytical Chemist

Confident LIMS  
All Rights Reserved  
(866) 506-5866

This product has been tested by Adams Independent Testing using valid testing methodologies. Values reported apply only to the product tested and only as the sample was received. Adams Independent Testing makes no claims as to the efficacy, safety, or other risks associated with any detected or nondetected level of any compounds reported herein. This Certificate shall not be reproduced except in full, without the written approval of Adams Independent Testing. Test results that are Pass/Fail are reported using the Oregon Health Authority, Public Health Division - Chapter 333-007-0320, effective 1/1/2021. Results above the Limit will be considered Fail and will be in red. This is for informational purposes only and can be changed upon request. Measurement Uncertainty is not used for pass/fail conditions but available upon request.